



300 Main Street, Coopersville, MI 49404

phone: 616.997.8808 fax:616.997.9317 www.ccstech.net sales@ccstech.net

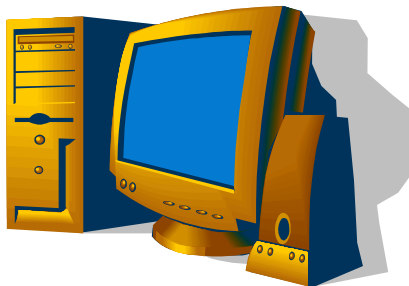
Introducing...



The Automated Remote Inventory and Examination Service

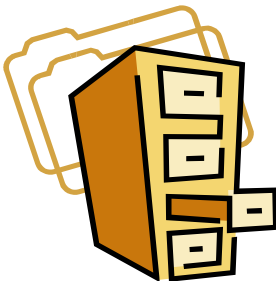
CCS Technologies is proud to introduce a program designed to put the **power back into your hands**. As an administrator, **you may be limited** by time constraints, manpower or expertise when it comes to determining just what equipment you have on your network. Now there's ARIES. Using this program on each of your PC's and Servers is **easy, inexpensive** and **quick!** Once installed, **you won't have to guess** what's inside your PC or Server. Now you'll know for sure!

How it Works...



A CCS technician comes to your business and installs a customized version of the Aries software specific to your company's network. Once installed, the software immediately does an inventory of that PC, including all hardware and network settings, and uploads that information to our Servers. Your information is completely private, available to you or your IT department on an "as needed" basis, and is assembled in an organized packet each month. Instead of spending countless man-hours obtaining information about your equipment only to find the information obsolete within weeks, let our real-time program do the work for you. Aries has you and your business covered.

What it Does...



- ◆ Obtains Serial numbers of PC's and inventories internal components, RAM, CPU, Add-ons and more!
- ◆ Records network settings, mapped drives and upgrade notifications when needed!
- ◆ Records network congestion, CPU usage, number of reboots and more, all in graph format!
- ◆ Records any changes made by the user, hardware or software, since the last report!
- ◆ Records every software program on your employee's computers and tracks licenses!

What it Costs...

\$49.99 per PC/yr

Look at some of the report examples on the other side of this sheet and contact a CCS Technologies representative to find out how easy it is to regain control of your company's network!